

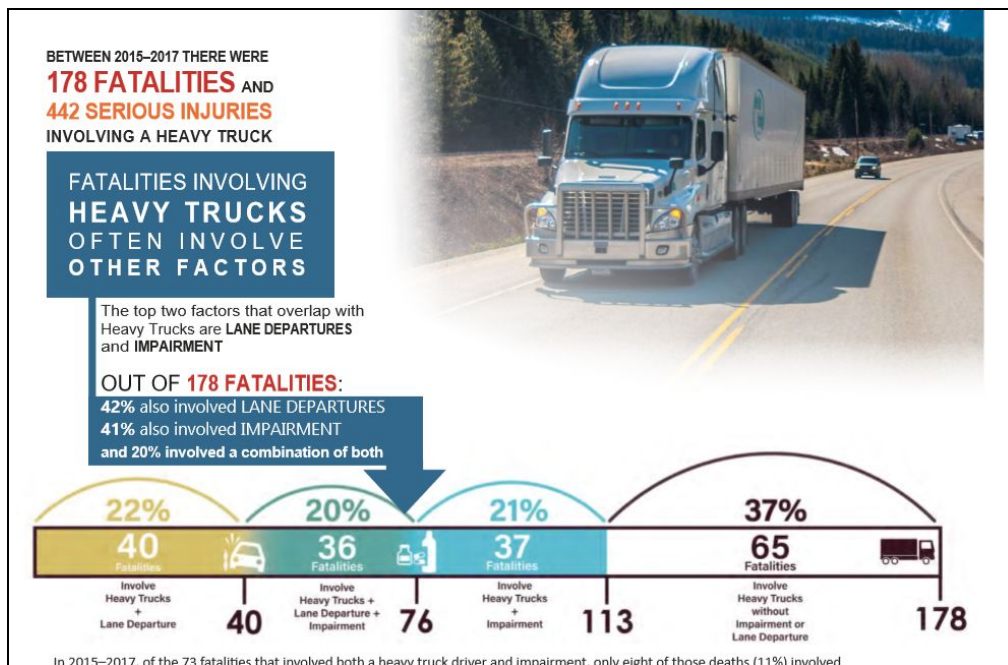


**Washington State Strategic Highway Safety Plan 2019: Heavy Trucks**  
*Learn More - Page 158 of the Plan*

**Challenge: Due to their size, weight, and numbers on the roadways, heavy trucks pose a higher risk of crashes that result in death and serious injuries.**

In 2015–2017, there was a 46 percent increase in the number of fatalities involving a heavy truck compared to 2012–2014.

An internal review of fatal crash reports conducted by the Washington State Patrol (WSP) revealed that 60 percent of heavy-truck-involved crashes were caused by passenger car and motorcycle drivers, while heavy truck drivers caused only 27 percent of the crashes. The remaining 13 percent of these crashes were due to other causes, predominately pedestrians or bicyclists who failed to yield the right-of-way to the heavy truck.



**Strategies and Objectives for Positive Change:**

To address these types of crashes, Target Zero partners are pursuing enforcement and education and outreach strategies focused on not only heavy truck drivers, but also the passenger car and motorcycle drivers who share the road with them.



**What You Can Do:**

- Promote industry safety initiatives – see page 165
- Identify and promote opportunities to prevent fatigued driving by increasing the availability of commercial truck parking
- Support education efforts and training curriculum for all drivers focused on how to safely operate around heavy trucks.